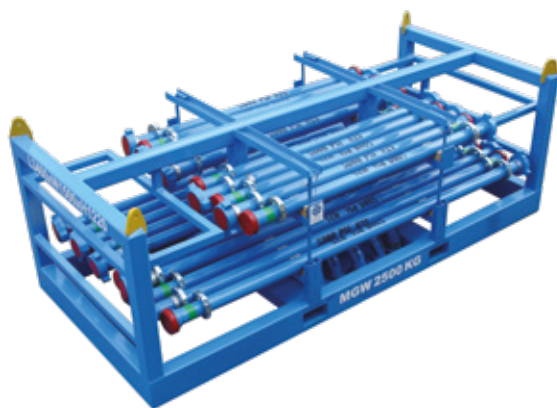


**FLOW
TEST
EQUIPMENT**

**OILFIELD EQUIPMENT MANUFACTURER
& INTEGRATED SOLUTIONS PROVIDER**



➔ Piping components

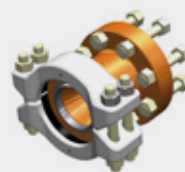


Pupjoints, Elbows & Tees up to 15000 psi and Swivels up to 6000 psi. With hammer unions, clamp connectors or flanged ends.

➔ Adapters & special components



Well Testing Data Headers.



Various adapters and Crossovers for oil & gas and general industries.



DNV 2.7.1 transport racks & baskets.



Associated piping accessories (tie-down clamps, thread protectors, test plugs, identification cases).

➔ Valve assemblies & valve actuation

Fast & Easy Installation in temporary piping systems.
2" to 6" / 2000 to 15000 psi.

Gate, Ball, Plug or Choke Valve pneumatic or hydraulic actuation for customized assemblies.



TRUCK & RAILCAR COUPLINGS



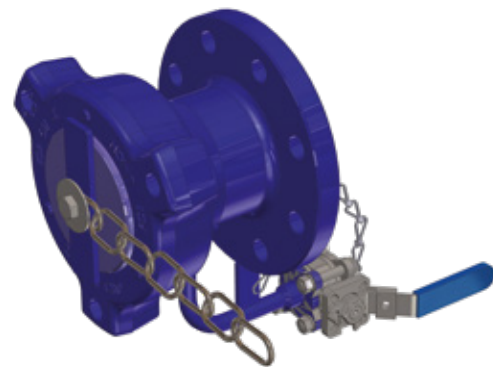
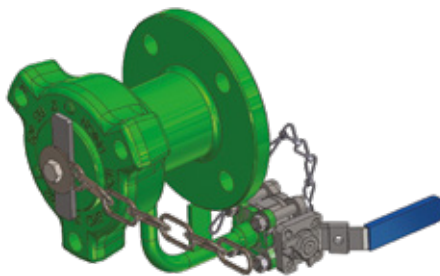
The European leader in **TANK LOADING COUPLINGS** for Rail Tank and Truck Tank transfer.



Railcar couplings to EN 12561-3 for LPG, ammonia, various chemicals. Available in ISO or ACME threads.



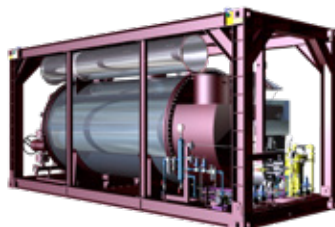
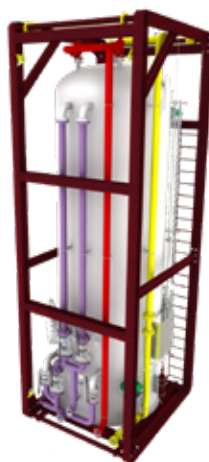
6602 & 37008 Couplings for petroleum products, alcohol, ethanol, base oil, lubricant additives, etc.



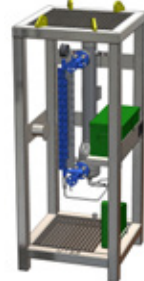
WELL TESTING & PROCESS EQUIPMENT

Turnkey solutions for Testing operations and Production.

3-phase separators, surge tanks, indirect heaters, choke manifolds, Metering skids.



Special devices to suit customer needs such as Multiphase Sampler, Shrinkage Tester Units, etc.



PUMPING UNITS

Fit-for-Purpose Pumping Units for various Exploration & Production applications:

- Crude oil pipeline transfer.
- Water and Brine Injection into wells.
- Acidized Water well cleaning.



For mobile services or permanent installations, safe or hazardous areas.

Diesel or electrically driven units.

Reciprocating, Progressive Cavity or Centrifugal pumps.



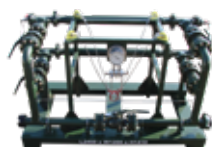
FILTRATION EQUIPMENT

Low & High Pressure Units to remove solids from well effluent in various applications:

- Well Testing.
- CT or Frac Flowback Systems.
- Drilling.
- Production Testing.
- Water Injection into wells.



Single or Dual Pot Sand Filters, Plug/Trash Catchers, Inline Filters.



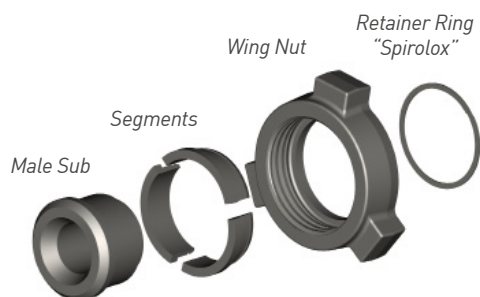
COUPLINGS & SWIVEL JOINTS



TYPE APPROVAL
Design Review

→ Hammer unions NACE and PED Compliant.

A worldwide reputed brand of Hammer Unions: FCE.



Detachable nut for integral assemblies.



Hammerless Unions.

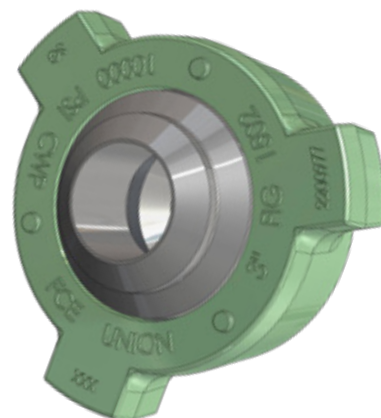
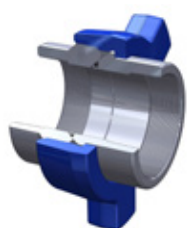
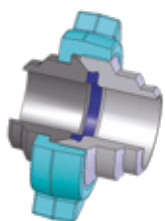


Figure 200 & 206 up to 10"
Figure 602 up to 4"
Figure 1002 up to 6"
Figure 1502 up to 5"
Figure 2202 up to 3"

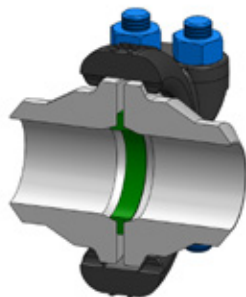
Up to 15000 psi in Sour Gas Service.



Threaded or butt weld assembly.



→ Clamp connectors NACE and PED Compliant.



For Well Testing application.
Clamps and hub sets in H2S service.
Inconel inlay in option.

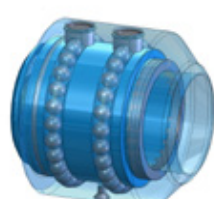
Heavy Duty up to 15000 psi.
Standard Duty up to 5000 psi.



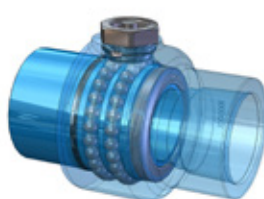
→ Swivel joints



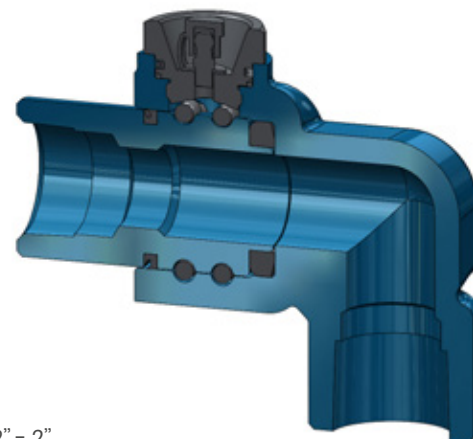
RBP series
16 b / 230 psi
2" - 3" - 4"



RMP series
30 to 345 b / 230 to 5000 psi
2" - 3" - 4"



RHP series
417 b / 6000 psi
3/8" - 1/2" - 3/4" - 1" - 1-1/4" - 1-1/2" - 2"



Services



A COMPREHENSIVE SET OF SERVICES

International Logistics, Technical Expertise & Engineered Solutions
Capability, Commissioning & Training.



A GUARANTEE OF PRODUCT QUALITY

Designed and Manufactured to the highest Standards.
PED module H and **ISO 9001** certification.



INSPECTION & RECERTIFICATION SERVICES

An extensive knowledge and well reputed Inspection body in Algeria.

A true worldwide reputation



FLUID
CONTROL
EUROPE

FLUID CONTROL EUROPE

786 rue George Sand
42350 La Talaudière
France

Tel. +33 (0)4 77 48 13 13
Fax. +33 (0)4 77 33 01 30

www.fce.fr
fce@fce.fr



FLUID
CONTROL
ALGÉRIE

FLUID CONTROL ALGÉRIE

Hassi-Messaoud,
Algeria

Tel. +213 (0)29 74 76 36
Tel./Fax. +213 (0)29 74 76 37

www.fce.fr
fca@fce.fr



FLOW
TEST
EQUIPMENT

FLOW TEST EQUIPMENT

Jebel Ali Free Zone,
Dubai - UAE

Tel. +971 4 880 8970
Fax. +971 4 880 8971

www.flowtestequipment.com
info@flowtestequipment.com